



Asure ID[®] 7

SETUP & INSTALLATION GUIDE



J. O'Brien Co.

Above. Beyond. Secure.[™]

INSTALLING ASURE ID 7

Asure ID 7 offers more than good looks, it provides dramatic speed for designing cards and entering cardholder data. Everything you need to design and populate cards is at your fingertips. Perform routine tasks with a simple mouse click.

- 1 Install the software from the CD or download it from the HID Global webpage.
www.hidglobal.com/AsureID




- 2 Follow the on-screen instructions to complete the installation.

Note: If the CD does not automatically open, use **My Computer** or **Windows Explorer** to view the CD contents.

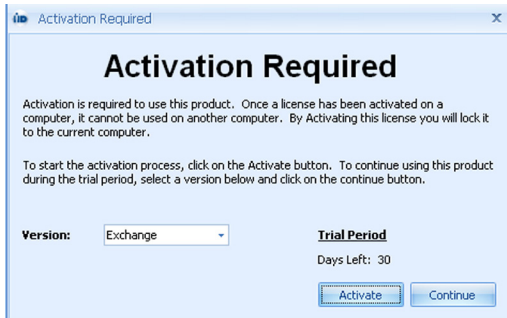
From the CD, double-click **Asure_ID_Setup.exe**.

INITIAL LOGIN

- 1 Open Asure ID 7, double-click . The Activation screen displays.

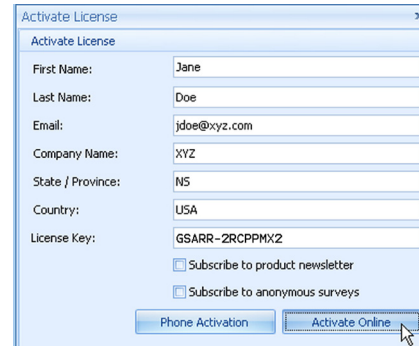
- 2 Click **Activate**. The **Activate License** screen displays.


Note: For a Trial version, click **Continue**.

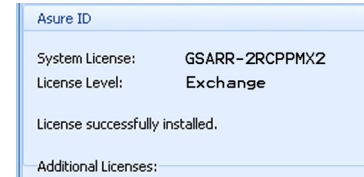


- 3 Enter your User Information and License Key. Find your License Key on the Installation Guide cover.

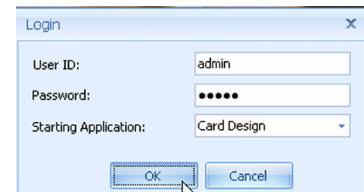
- 4 Click **Phone Activation** or **Online Activation**.

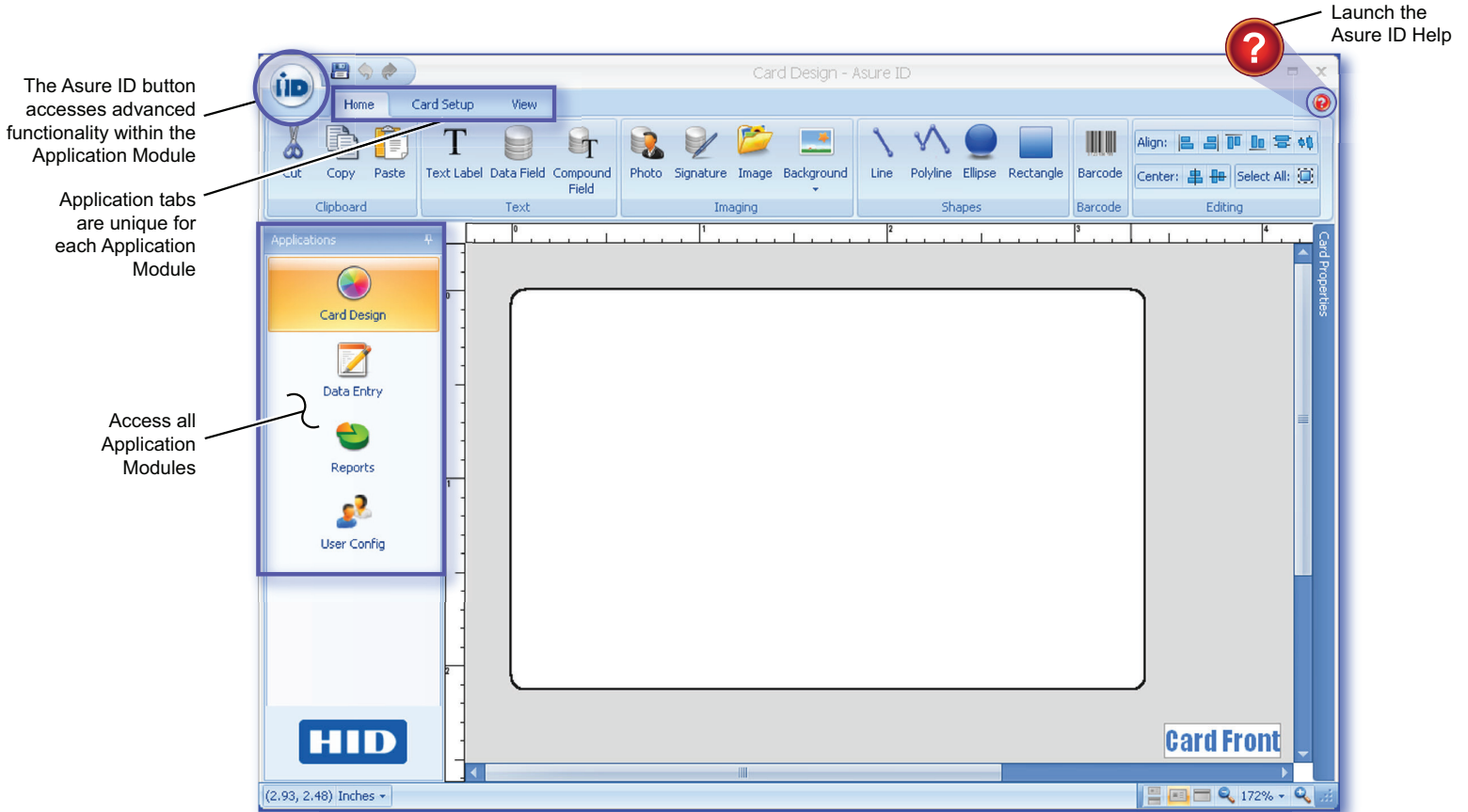


- 5 If successful, the **System License and License Level** displays. You are returned to the **Activation Required** dialog. Click close  and the login screen displays.



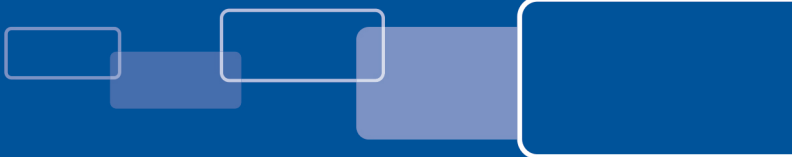
- 6 For logging onto the software, enter **admin** for both the User ID and Password.





Note: For additional information, reference the Asure ID 7 User Guide found on the software CD. In addition, download the User Guide from www.hidglobal.com/AsureID.

Asure ID[®] 7



© 2011 HID Global Corporation. All rights reserved.

HID, the HID logo, and Asure ID are the trademarks or registered trademarks of HID Global Corporation in the U.S. and other countries.

All other trademarks, service marks, and product names are trademarks of their respective owners.



J. O'Brien Co.
Above. Beyond. Secure.[™]

support.hidglobal.com

L001561 REV A



hidglobal.com